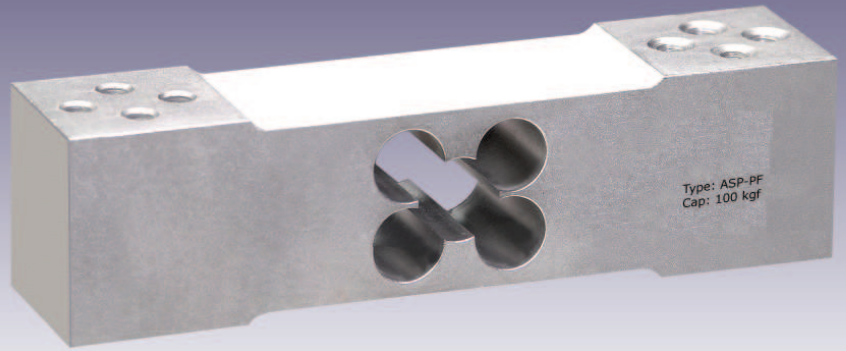
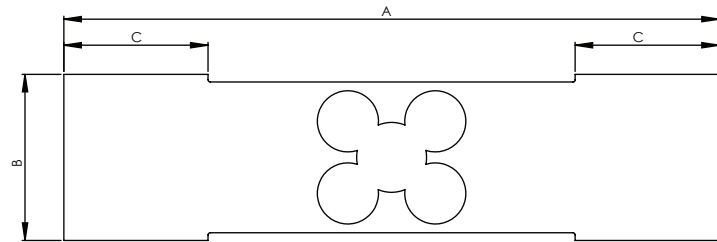
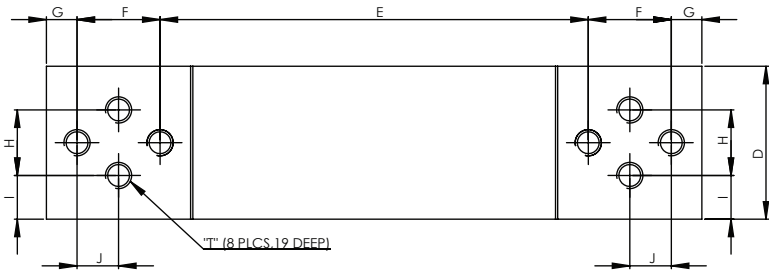


Model ASP-PF



CAPACITY RANGE 60 TO 100 KGF											
CAPACITY KGF	A	B	C	D	E	F	G	H	I	J	T
ASP-PF 60-100	150	38	33	35	98	19	7	15	10	9.5	M 8 X 1



Performance Data

Capacity Range (in kgf)	60/100
Nominal Sensitivity (mV/V)	2+/-10%
Zero Signal Tolerance	0 ± 3%
Input Resistance	415±15 Ω
Output Resistance	350 ± 3 Ω
Recommended Excitation Voltage	10 VDC
Maximum Excitation Voltage	15 VDC
Linearity Deviation (as % of Full Scale)	< ± 0.017
Repeatability (as % of Full Scale)	< ± 0.017
Hysteresis (as % of Full Scale)	< ± 0.017
Creep (as % of Full Scale) in 30 min	< ± 0.020
Effect of Temperature on Zero(% / o C)	± 0.002
Effect of Temp. on Span (% / o C of Load)	± 0.001
Compensated Temperature Range	-10 to + 40°C
Operating Temperature Range	-20 to + 70°C
Combined Error (as % of Full Scale)	< ± 0.023 max
Isolation Resistance (@ 50 VDC)	> 1000 M Ω
Max. Limit Force (as % of Full Scale)	150
Breaking Force (as % of Full Scale)	300
Lateral Load Limit (as % of Full Scale)	
Protection Class	IP 65
Material of Construction	Aluminum Alloy

Features

- Low Creep
- Excellent Overload Capability
- Low Profile Design

Application

Low Profile bench scale
Floor Scale / Packaging machine

Sensotech: No. 2/675, Ranga Reddy Garden, Neelankarai Chennai - 600041, Tamil Nadu, India

Telephone:

+ (91)-(44)-32972779
+ (91)-(44)-24494305

Mobile:

+ (91)-7305716667 + (91)-9884869600
+ (91)-9380560667 + (91)-9324278988

Email:

sensotechindia@gmail.com
sensotech@vsnl.net

Website:

www.sensomaticloadcell.net
www.sensomaticloadcell.co
www.sensomaticloadcell.co.in